



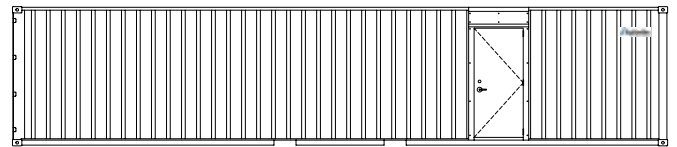
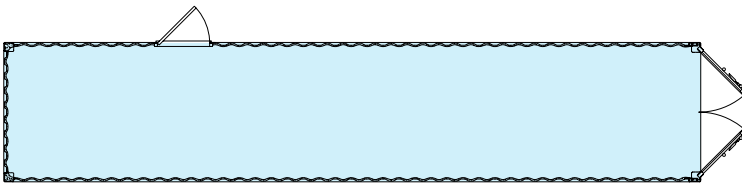
# LIT & HEATED STORAGE

STLH840

## SECURE STORAGE FOR NEARLY ANY CLIMATE

When you need to store your stuff in wet climates or poorly lit areas, adding a few modifications to a storage container can make all the difference. Whether you need to add some light and heat, or need finished walls to hang a variety of tools, a BigSteelBox will keep your equipment secure and accessible.

Features	Lit Storage	Heated Storage	Lined Storage
8'(w) x 40'(l) x 8'6(h) corten steel shell is durable and easy to transport	✓	✓	✓
Hard wood bamboo floor is durable and treated to prevent rodents from eating through the bottom	✓	✓	✓
Powder coated steel man door with deadbolt for added durability and security	(1)	(1)	(1)
Interior vapor-proof lighting for added moisture resistance and durability	(4)	(4)	(4)
Duplex receptacles to plug in additional tools, lights, or equipment	(3)	(3)	(3)
Spray foam insulation to prevent condensation and batt insulation (lined storage only) to improve heat retention	1/2" (R3) Ceiling Only	1" (R6) Ceiling/Walls	1/2"+Batt (R15) Ceiling/Walls
Pig tail extension cord to easily supply power using a standard extension cord	✓	-	-
100 amp panel with breakers & hard wire fitting to support power requirements (min. 120/240v 60amp power)	-	✓	✓
Fan-forced heater with thermostat to regulate temperatures in cold climates	-	(2) 4800w	(2) 4800w
Framed pre-varnished plywood walls with 2"x4" studs to create a more functional workspace	-	-	✓



\* Specifications are subject to change.