



# 12X40 OFFICE

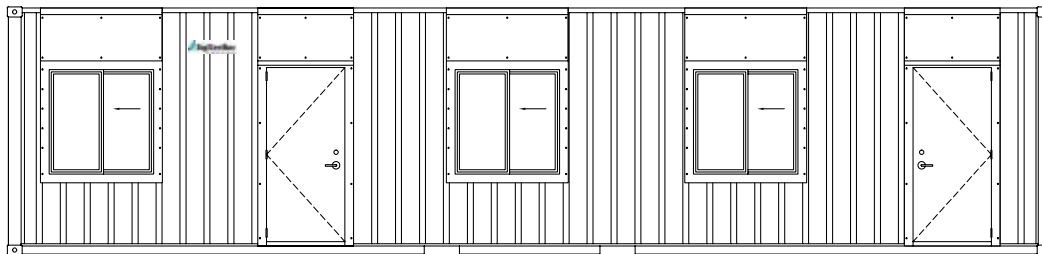
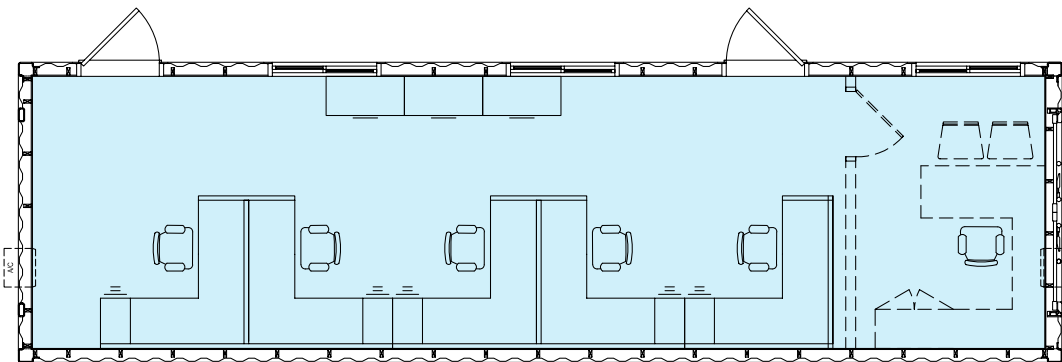
MBM01240

## A MOBILE OFFICE THAT FEELS LIKE A PERMANENT SPACE

When you need a large work space for multiple staff, our 11'6" x 40' Office is the perfect solution. While most of our offices of this size are used for long term projects, you can still be confident it can be easily moved whenever your needs change. Whether that's across the site, or across the country.

### SPECIFICATIONS

- 11'6" (w) x 40' (l) x 9'6" (h) corten steel shell is durable and easy to transport
- (2) powder coated steel man doors with deadbolt for added durability and security
- (3) 4' x 3' powder coated sliding window with vandalism guard to protect the glass
- Durable rubber baseboards to protect the walls from spills
- Non-slip epoxy flooring is durable and easy to maintain
- 1/2" spray foam with fiberglass insulation (R15) to regulate temperatures
- Framed walls with 2"x4" wood studs and 1/2" vinyl-wrapped drywall to create a brighter and more comfortable workspace
- (3) 2000w wall-mounted heaters with thermostat to warm the office while maximizing space
- (2) 6000BTU air conditioning unit to quickly cool and create a comfortable workspace
- (2) Exterior photocell lights for safety and security
- Interior vapor-proof lighting for added moisture resistance and durability
- 100 amp panel with breakers & hard wire fitting for easy connection to a power source
- Telephone & data hookups for fast connectivity
- (8) Duplex receptacles to power your devices



### ALBERTA BUILDING CODE PART 10 CERTIFICATION

This office can be built to meet the Part 10 specifications of the Alberta Building Code. If your site requires this standard, we'd be happy to provide a custom quote.

\* Specifications are subject to change. Furniture not included.