



# 12X40' 50/50 ENGINEER SUITE

WTES1240

## SKID-MOUNTED 2BR LIVING QUARTERS

The 40' 50/50 wellsite unit has two living suites laid out to maximize the space. The interiors contain many amenities that a worker would expect at home, which helps attract and retain skilled labour. Each suite includes a private bedroom, washroom with shower, living room, and cooking area.

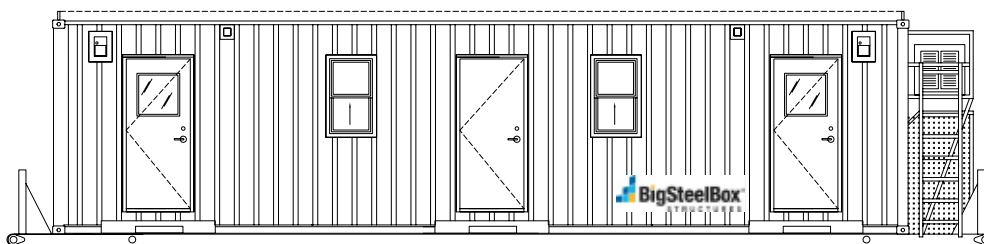
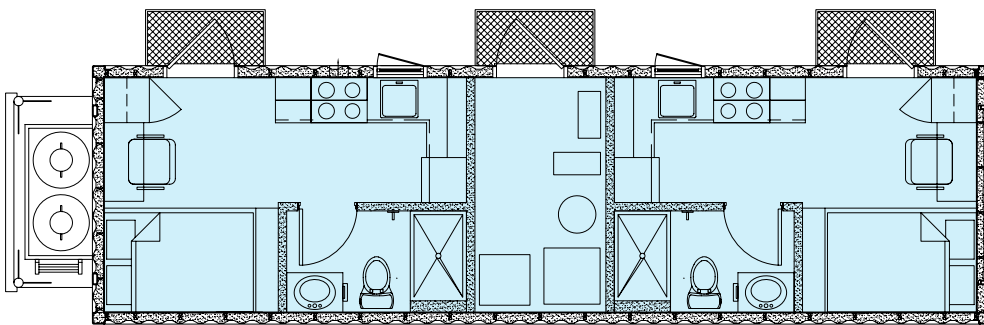
### STANDARD SPECIFICATIONS

- 12' wide corten steel shell is durable and easy to transport
- (3) in-set steel man doors to meet 11'6" width requirements for easier transportability
- (2) 2' x 3', (2) 4' x 3', and (2) 6' x 4' in-set sliding windows maximize the natural light inside
- 3" spray foam insulation (R18) on ceiling & walls to maximize heat in cold climates
- Vinyl wrapped drywall creates a clean and durable finish
- Rigid floor insulation for added heat retention
- Vinyl flooring is easy to clean & cost effective
- Durable rubber baseboards to protect the walls from spills
- Propane furnace to evenly heat the space in cold temperatures
- Interior acrylic lens lights evenly diffuse light throughout the space
- Telephone & data hookups for fast connectivity
- 100 amp panel with breakers & hard wire fitting for easy connection to a power source
- Plastic laminate and melamine millwork add durability in moisture-rich environments
- (2) air conditioning units to quickly cool and create a comfortable space
- 30 gal. hot water tank and 400 gal. on board fresh water so water is always available
- (2) 400L propane tanks enclosed in checkered aluminum to operate the heat & appliances
- (2) Kitchen/living areas with a fridge, stove, microwave, sink, sofa, built-in desk with chair, storage, TV, cork board, and white board for comfort and convenience
- (2) Bathrooms come with a 3' x 3' shower, toilet, & 30" vanity, just like at home
- Bedroom furniture including a double bed and wardrobe for comfort and functionality

- Skid-mounted so it's easy to move

### EXECUTIVE PACKAGE

- Exterior LED lighting for safety and security
- 4" spray foam insulation (R24) on ceiling & walls to maximize heat in cold climates
- Interior vapor-proof lighting for added moisture resistance and durability
- Rolled vinyl commercial grade flooring for easy maintenance and clean finish
- Built-in bed, desk, & wardrobe and a storage cabinet over the toilet to maximize space
- Slide-out BBQ, roller blinds, and central vacuum for an added taste of home
- Bedside light for late night reading
- Built-in USB outlets to conveniently charge your devices
- Steel studs to improve the lifespan of the structure and prevent rot & mould



### ADD ONS

- + Quartz counter tops
- + Interior LED lighting
- + Upgraded appliances/furniture
- + Custom paint / branding

### WHY STEEL

- + Durable: Built for ocean transport
- + Portable: By truck, crane, or forklift
- + Stackable: Configured to fit the space
- + Fully Sealed: Rodent & water tight

\* Specifications are subject to change. Furniture included as noted.