



8X40 KITCHEN/LUNCH ROOM

MBKL840

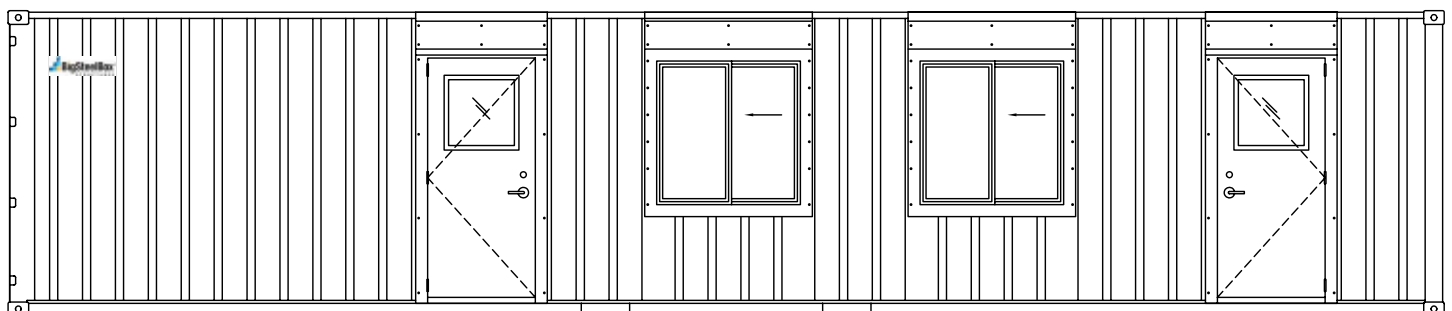
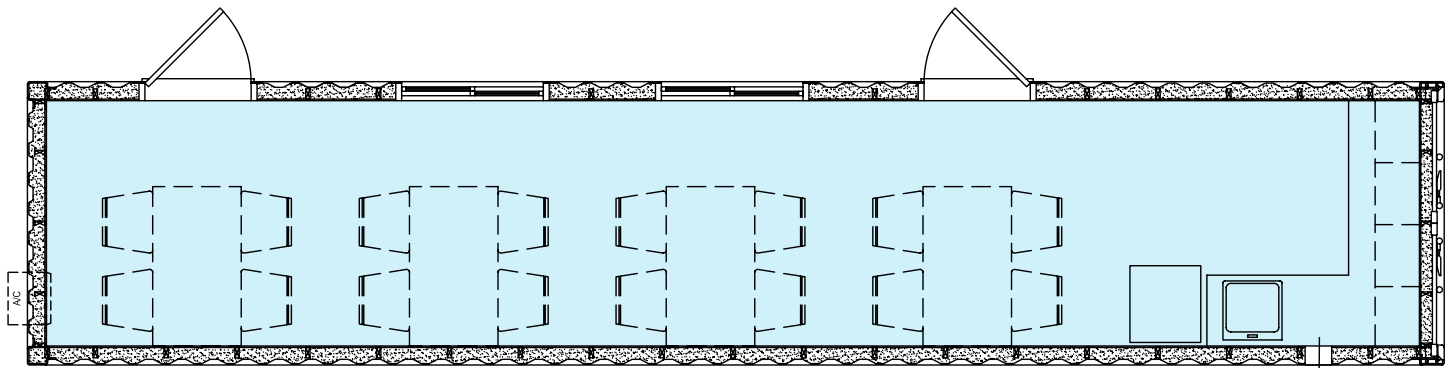
LUNCH ROOMS THAT MOVE WHEN THE WORK DOES

Our 8'x40' lunch room facilitates larger teams than the 20' lunch room and still has the same benefits that come with a steel-based product. If space is ever limited, other storage containers and steel buildings can be stacked on top. Most importantly, it's 8' width makes it easy to move around the site or across the country.

SPECIFICATIONS

- 8'(w) x 40'(l) x 8'6(h) corten steel shell is durable and easy to transport
- (2) powder coated steel man doors with window for additional natural light
- (2) 4' x 3' powder coated sliding windows increase the amount of natural light inside
- 1/2" spray foam with fibre glass insulation (R15) to regulate temperatures
- Vinyl wrapped drywall creates a clean and durable finish
- Rolled vinyl commercial grade flooring for easy maintenance and clean finish
- Durable rubber baseboards to protect the walls from spills
- (3) 2000w wall-mounted electric heaters warm the unit while maximizing space
- (1) 12000BTU air conditioning unit to quickly cool and create a comfortable space
- Interior vapor-proof lighting for added moisture resistance and durability
- 100 amp panel with breakers & hard wire fitting for easy connection to a power source
- Paper towel and soap dispensers for hygiene and ease of cleanup
- Kitchenette for convenience when preparing or storing food. Includes: apartment-sized fridge, (3) microwaves, upper & lower melamine cabinets, plastic laminate countertops, single stainless steel sink, and garbage can
- Exhaust fan for removing food odours

**ALBERTA BUILDING CODE
PART 10 CERTIFICATION
AVAILABLE UPON REQUEST.**



* Specifications are subject to change. Furniture not included.